



CHALLENGE 4 - WILD WEST

CHALLENGE 4

Your challenge is to work your way through the Wild West. Find the phones. Complete your mission log and report back to Soportar.



COUNTDOWN! PROCESSING €€€
EXIT HERE

COUNTDOWN! PROCESSING €€€
YOU ARE HERE

CONTINUE



CHALLENGE 4 - WILD WEST

PUPIL SHEETS

1 Copy/
Pupil (excls.
Peer Team)



PUPIL OVERVIEW

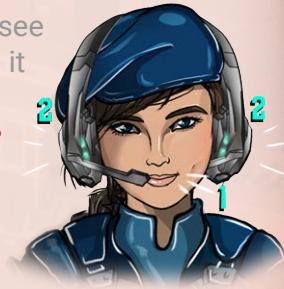
Your Challenge is to explore the Wild West, find the 10 phones and unlock the collectible. This Challenge is about **Teamwork**. Venture owners work with many people to get the job done. For example, Venture Owners work with sales teams; marketing; advertisers; suppliers; web designers; other directors, and; branding.



Perception is having two or more different points of view for the same thing - which could be a physical item or an idea. Two people can see the same item, but have a different point of view. Sometimes when we are looking for one item, we might miss another item. This is a **blind spot in our perception**. The great thing about working in teams is your teammate(s) might see what you do not see.

It is okay, if you do not perceive/see every item. It is not about getting it right or wrong. If you learn from the experience, this is success. **Empathy is putting yourself in the other person's shoes to look from their perspective/point of view.**

Active listening is required to understand another person's perception/perspective. Remember to use paraphrasing to check the message. Sometimes working in teams can be stressful and our bodies will give us the signals for anxiety.





CHALLENGE 4 - WILD WEST

When we are in the amber zone use the T-CUP techniques to get back to the green zone.

An innovation is a new way of doing a job or solving a problem for someone. **To be an innovator you need to see an item from a different perspective.** For example, when other people see a duck you see a rabbit or when other people see a firework in the sky, you see drones with lights on them. We will explore these examples more throughout the lesson. There are lots of benefits to working in a team, together we can get jobs done, **quicker, cheaper and to a better standard.**

HERE ARE THE KEY MESSAGES



- Perception is having two points of view for one item.
- A perception blind spot is when we are looking for one item so intently that we miss another item.
- Empathy is putting yourself in the other person's shoes to look from their perspective/ point of view.
- To work effectively in a team, use:
 - Active listening to understand what another person's perception/ perspective is.
 - Paraphrasing to check the message.
 - The T-CUP techniques to get back to the green zone, from the amber zone when you are anxious.
- To be an innovator you need to see an item from a different perspective.
- In teams we can get jobs done, quicker, cheaper and to a better standard.



CHALLENGE 4 - WILD WEST





CHALLENGE 4 - WILD WEST

CLASSROOM INDIVIDUAL ACTIVITY 1

SNOW BLIZZARD

Follow the instructions below for this activity for your group:

- Remove this page from the book, one page needed per group.
- Tear the page into 8 pieces.
- Each person in the group is to write their name on 1 of the pieces of paper.
- Scrunch up the pieces of paper with the names on them. Put them in a pile in the center of your groups' table to create a blizzard of bits of paper like a snow storm.
- When all the pieces are in the center of the table, find your own name in SILENCE.
- If you open a piece of paper with someone else's name, scrunch it up again and put it back in the pile.



Enter your name in this box.





CHALLENGE 4 - WILD WEST



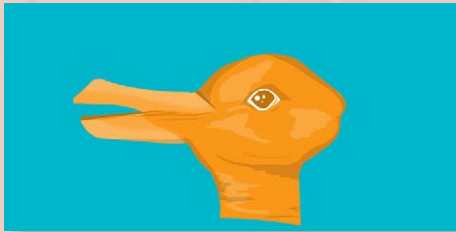


CHALLENGE 4 - WILD WEST

CLASSROOM INDIVIDUAL ACTIVITY 2

WHAT DO YOU SEE?

On your own write down what you see for each of the following 5 images.
When you are finished wait for the next instruction from the presenter.





CHALLENGE 4 - WILD WEST

FEEDBACK SHEET

Enter the date

____/____/____

Enter the team members' names of today's Peer Educators

TEAM MEMBERS ARE:

On your own answer yes or no to each question below. Then add up the score.

Success Criteria	Achieved? (Y/N)
Everybody in the presenting group contributed.	
Peer Educators tried to speak clearly.	
Peer Educators tried to sound enthusiastic.	
Peer Educators tried to stimulate discussion amongst the rest of the class.	
Peer Educators tried to encourage each group to feedback their thoughts / comments.	
TOTAL YES: <input type="text"/> TOTAL NO: <input type="text"/>	



In your groups, list 3 things today's team did well.



In your groups, note one item that would make the presentation even better if.

--





CHALLENGE 4 - WILD WEST

HOME ACTIVITY

MISSION LOG

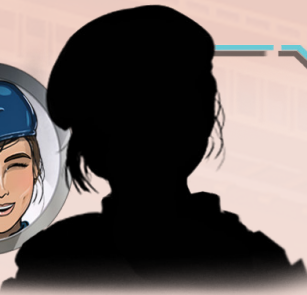
Write down below your takeaways from your challenge today:

A large, empty white rectangular area intended for writing the mission log.



IT'S COOL TO BE ME

Look at yourself in the mirror and say "it's cool to be me" every day for the next five days.





CHALLENGE 4 - WILD WEST

HOME ACTIVITY

PREPARE FOR THE NEXT CHALLENGE 5 - CASTLE IN THE CLOUDS

Talk to your family and ask can they give you an example (in a work or home setting) of when they worked with other people to solve a problem. How did they think of the solutions. For example, it could be hanging a picture on the wall, but having no drill or hammer.

Parent/ Guardian signature

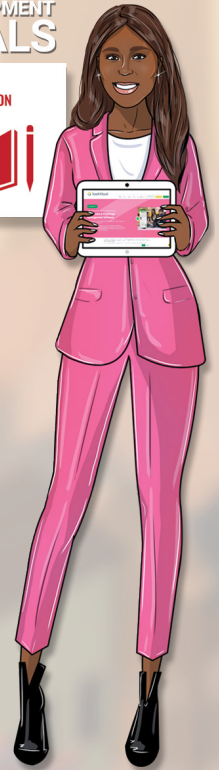
MAGICAL LEADERS

CHALLENGE 4 - WILD WEST



HANG ME ON YOUR BEDROOM WALL

TEAM-WORKING



INNOVATION IS 1 TEAM, MANY PERSPECTIVES

ITS A DUCK!

ITS A RABBIT

INNOVATION NEEDS A CHANGE IN PERCEPTION

1 POINT OF VIEW

2 PERCEPTIONS

CHANGING PERCEPTION

WIN

BLIND SPOT

WHEN WE ARE LOOKING FOR ONE ITEM WE MIGHT MISS ANOTHER ITEM

EMPATHY

IS PUTTING YOURSELF IN THE OTHER PERSON'S SHOES TO LOOK FROM THEIR PERSPECTIVE/POINT OF VIEW





CHALLENGE 4 - WILD WEST

