



## CHALLENGE 4 - WILD WEST

### CHALLENGE 4

Your challenge is to work your way through the Wild West. Find the phones. Complete your mission log and report back to Soportar.



COUNTDOWN PROCESSING <<<<  
EXIT HERE

COUNTDOWN PROCESSING <<<<  
YOU ARE HERE

CONTINUE





# CHALLENGE 4 - WILD WEST

## GROUP LEADER SHEETS

4 Copies Per Class



## PUPIL OVERVIEW

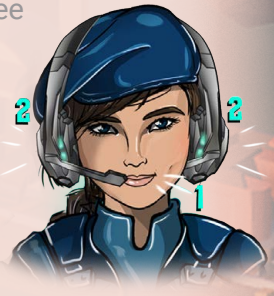
Your Challenge is to explore the Wild West, find the 10 phones and unlock the collectible. This Challenge is about **Teamwork**. Venture owners work with many people to get the job done. For example, Venture Owners work with sales teams; marketing; advertisers; suppliers; web designers; other directors, and; branding.



Perception is having two or more different points of view for the same thing - which could be a physical item or an idea. Two people can see the same item, but have a different point of view. Sometimes when we are looking for one item, we might miss another item. This is a **blind spot in our perception**. The great thing about working in teams is your teammate(s) might see what you do not see.

It is okay, if you do not perceive/see every item. It is not about getting it right or wrong. If you learn from the experience, this is success. **Empathy is putting yourself in the other person's shoes to look from their perspective/point of view.**

Active listening is required to understand another person's perception/perspective. Remember to use paraphrasing to check the message. Sometimes working in teams can be stressful and our bodies will give us the signals for anxiety. When we are in the amber zone use the T-CUP techniques to get back to the green zone.







## CHALLENGE 4 - WILD WEST

An innovation is a new way of doing a job or solving a problem for someone. **To be an innovator you need to see an item from a different perspective.** For example, when other people see a duck you see a rabbit or when other people see a firework in the sky, you see drones with lights on them. We will explore these examples more throughout the lesson. There are lots of benefits to working in a team, together we can get jobs done, **quicker, cheaper and to a better standard.**



### HERE ARE THE KEY MESSAGES

- Perception is having two points of view for one item.
- A perception blind spot is when we are looking for one item so intently that we miss another item.
- Empathy is putting yourself in the other person's shoes to look from their perspective/ point of view.
- To work effectively in a team, use:
  - Active listening to understand what another person's perception/ perspective is.
  - Paraphrasing to check the message.
  - The T-CUP techniques to get back to the green zone, from the amber zone when you are anxious.
- To be an innovator you need to see an item from a different perspective.
- In teams we can get jobs done, quicker, cheaper and to a better standard.





## CHALLENGE 4 - WILD WEST

### PREPARATION INSTRUCTIONS



Read through your group activity sheets. Think about what kind of answers people might give and what questions you could ask to get everyone thinking.

If you have any questions about the challenge make sure you ask your teacher beforehand. You can also practice at home by getting your friends and family to play the role of the pupils that you will be helping during the challenge.



## CHALLENGE 4 - WILD WEST

### CLASSROOM GROUP ACTIVITY 1

#### READ:

We saw in the snow storm activity that it is quicker to get the task done if we work together as a team.

#### ASK:

**Question:** Why is teamwork important for Venture owners, success in life and in school?

#### ANY OTHER QUESTIONS







## CHALLENGE 4 - WILD WEST

### CLASSROOM GROUP ACTIVITY 2

READ:

We have just looked at five images. Can we compare our answers for the last activity?

ASK:

**Question:** For the first image what did you see?

**Question:** For the remaining 4 images what did you see?

ANY OTHER QUESTIONS

